

# СЕВЕРО-ЗАПАДНАЯ СВЕТОТЕХНИЧЕСКАЯ ЛАБОРАТОРИЯ

Эффективность света:

**123 Lumen/Watt**

Качество света:

**CRI: 81,4**

Цветовая температура:

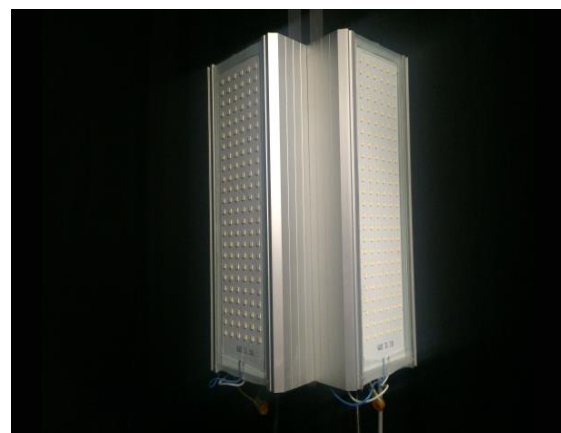
**4127 K**

Поток: 11503 lm

Интенс.: 2794 cd

Мощн.: 93,3 W

КПД: 0,98



Название продукта:

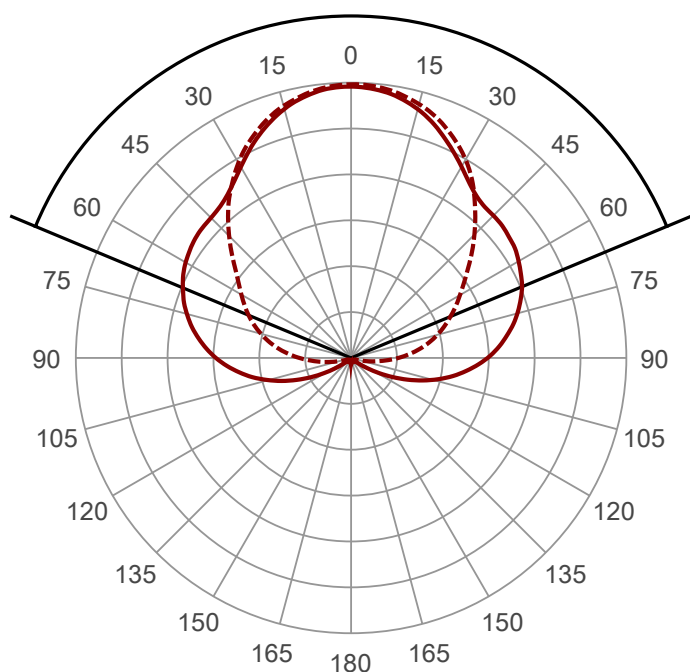
**СС**

**M1-MK-E-96-250.195.160-4-0-67**

Дата и время:

**24.03.2016 14:47:52**

Угол пучка **134,8°** (3 C-PLANES)

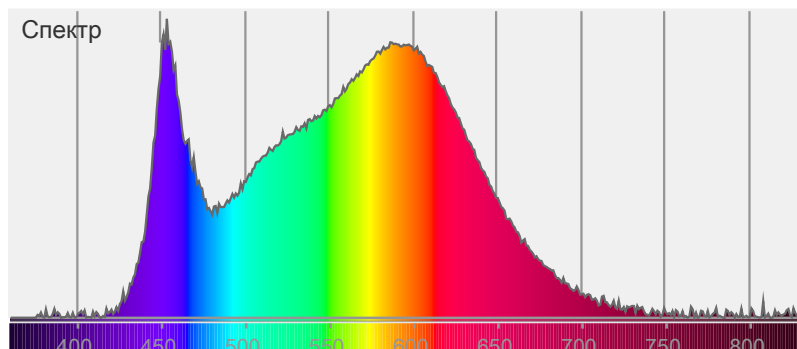


Цвет



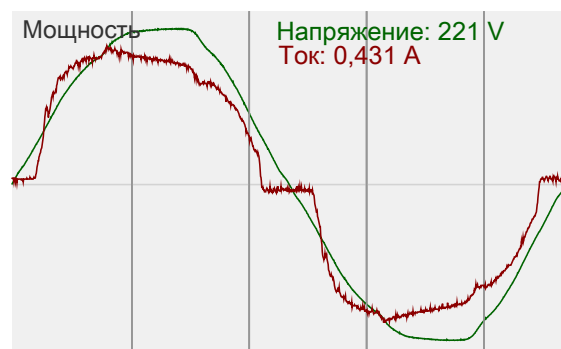
CIE1931  
x: 0,377  
y: 0,380

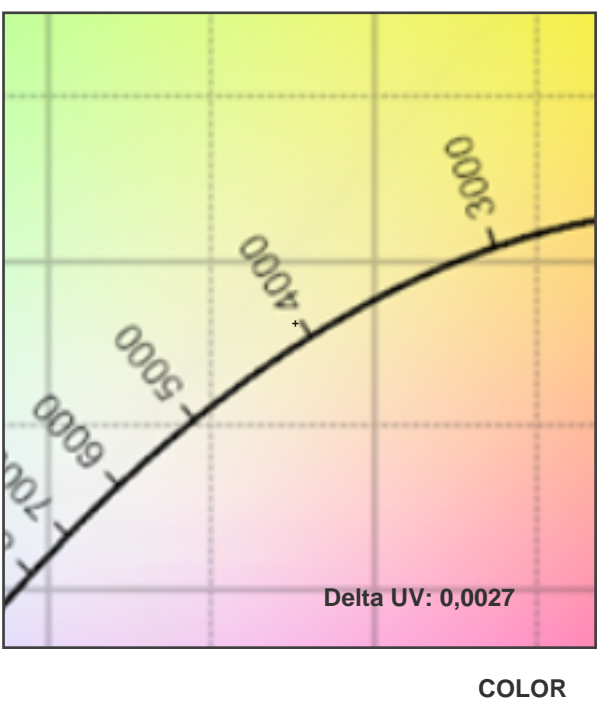
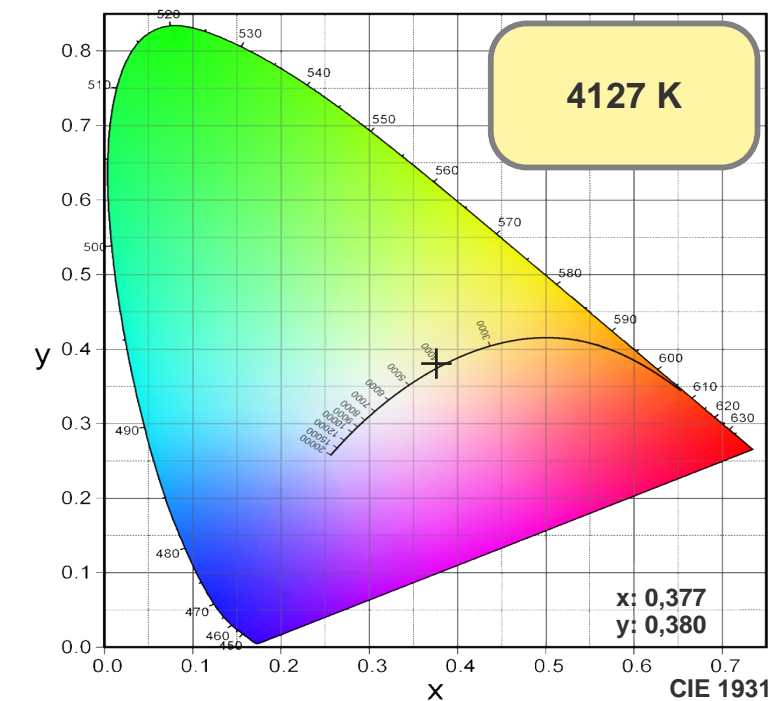
Спектр



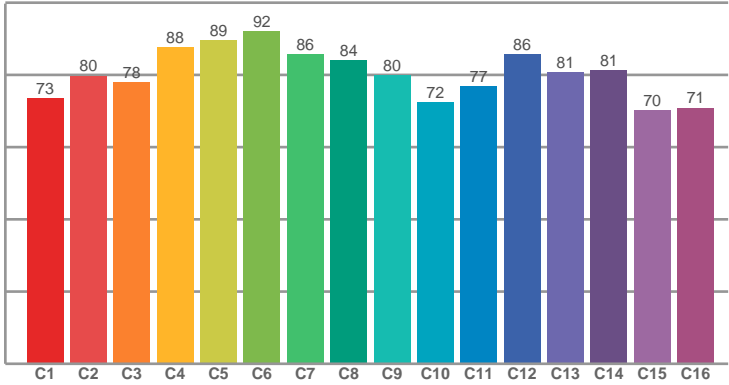
Мощность

Напряжение: 221 V  
Ток: 0,431 A

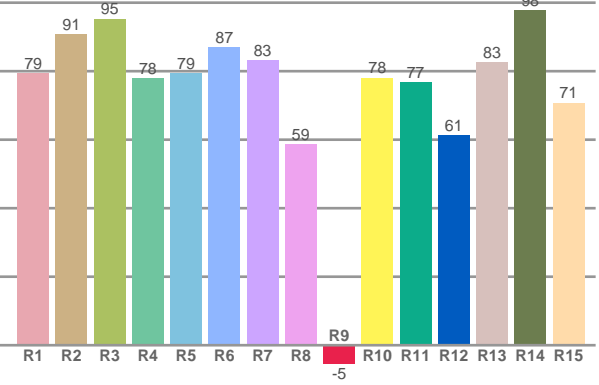




TM30: 80,5



CRI: 81,4 (R1-R8)



CRI R values, only R1-R8 are used to calculate final CRI value

R1	R2	R3	R4	R5	R6	R7	R8	R9	R10	R11	R12	R13	R14	R15
79,30	90,71	95,26	77,94	79,43	86,96	83,09	58,59	-5,42	78,04	76,80	61,15	82,61	97,77	70,77

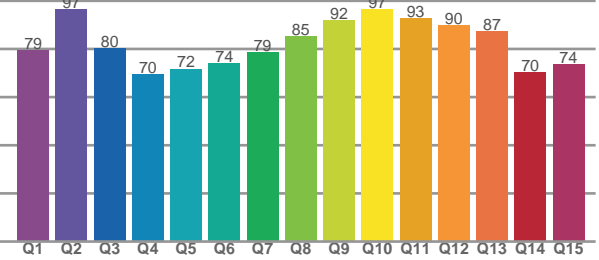
TM30 C values, 16 binned values out of total of 99 C values

C1	C2	C3	C4	C5	C6	C7	C8	C9	C10	C11	C12	C13	C14	C15	C16
73,49	79,75	78,00	87,68	89,50	92,06	85,72	83,91	79,94	72,37	76,80	85,71	80,72	81,32	70,25	70,85

CQS Q values

Q1	Q2	Q3	Q4	Q5	Q6	Q7	Q8	Q9	Q10	Q11	Q12	Q13	Q14	Q15
79,38	96,55	80,32	69,69	71,81	74,21	78,67	85,29	92,03	96,53	92,63	90,04	87,40	70,28	73,79

CQS: 80,3



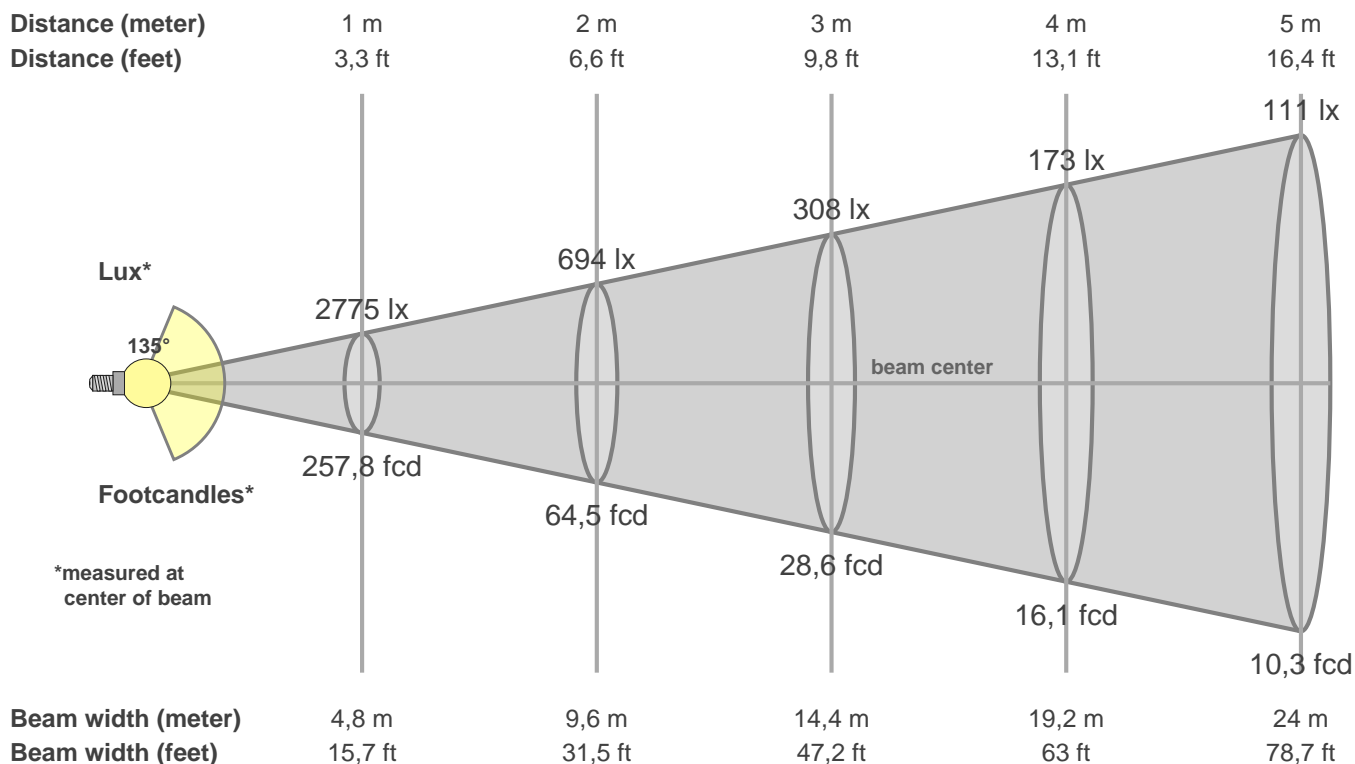
Color parameters

CCT	CRI	CRI R9	TM30 Rf	TM30 Rg	CQS	x	y	u	v	Duv
4127 K	81,4	-5,4	80,5	91,5	80,3	0,4	0,4	0,2	0,3	0,0027

# СЕВЕРО-ЗАПАДНАЯ СВЕТОТЕХНИЧЕСКАЯ ЛАБОРАТОРИЯ

## Beam details

3 of 3



### Intensities in 0° c-plane

0°	9°	18°	27°	36°	45°	54°	63°	72°	81°	90°	99°	108°	117°	126°	135°	144°	153°	162°	171°
2775	2722	2568	2336	2114	2025	1996	1919	1792	1610	1381	1095	760	403	122	44	42	45	43	46
100%	98%	93%	84%	76%	73%	72%	69%	65%	58%	50%	39%	27%	15%	4%	2%	2%	2%	2%	2%

### Intensities in 60° c-plane

0°	9°	18°	27°	36°	45°	54°	63°	72°	81°	90°	99°	108°	117°	126°	135°	144°	153°	162°	171°
2775	2745	2610	2393	2098	1762	1446	1229	1027	794	529	266	84	36	38	39	40	42	44	47
100%	99%	94%	86%	76%	63%	52%	44%	37%	29%	19%	10%	3%	1%	1%	1%	1%	2%	2%	2%

### Intensities in 180° c-plane

0°	9°	18°	27°	36°	45°	54°	63°	72°	81°	90°	99°	108°	117°	126°	135°	144°	153°	162°	171°
2775	2721	2567	2335	2123	2057	2025	1942	1813	1627	1393	1094	743	380	110	48	47	46	45	47
100%	98%	92%	84%	76%	74%	73%	70%	65%	59%	50%	39%	27%	14%	4%	2%	2%	2%	2%	2%

### Intensities in 240° c-plane

0°	9°	18°	27°	36°	45°	54°	63°	72°	81°	90°	99°	108°	117°	126°	135°	144°	153°	162°	171°
2775	2757	2634	2425	2129	1781	1458	1210	987	750	483	224	64	39	40	41	41	46	45	48
100%	99%	95%	87%	77%	64%	53%	44%	36%	27%	17%	8%	2%	1%	1%	1%	1%	2%	2%	2%

Beam angle 50%	Field angle 10%	Cutoff angle 2,5%	Intensity ratio in 120° cone	Intensity ratio in 90° cone
134,8°	210,3°	230,7°	55,2%	36,3%