

СЕВЕРО-ЗАПАДНАЯ СВЕТОТЕХНИЧЕСКАЯ ЛАБОРАТОРИЯ

Эффективность света:

122 Lumen/Watt

Качество света:

CRI: 84,7

Цветовая температура:

4222 K

Поток: 1838 lm

Интенс.: 779 cd

Мощн.: 15,1 W

КПД: 0,93



Название продукта:

СС 03-У-К-14-1190.65.15-4-0-65

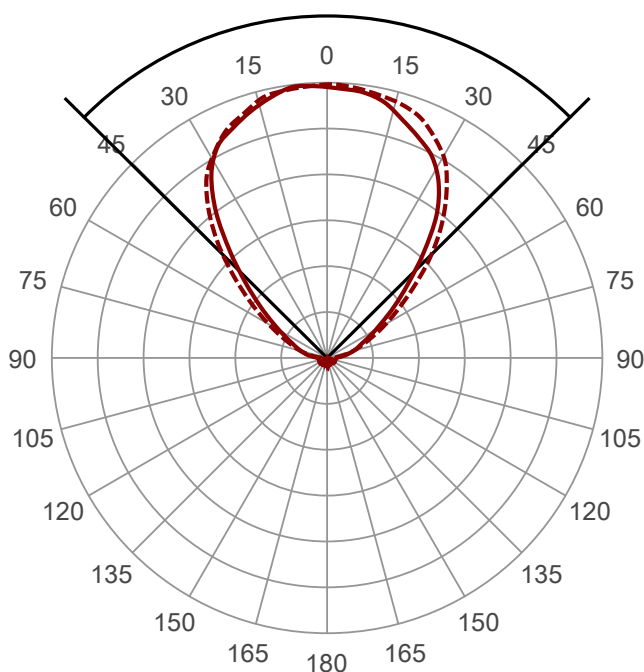
Дата и время:

01.08.2016 15:10:22

Угол пучка

90,6°

(4 PLANES)
8 C-Planes

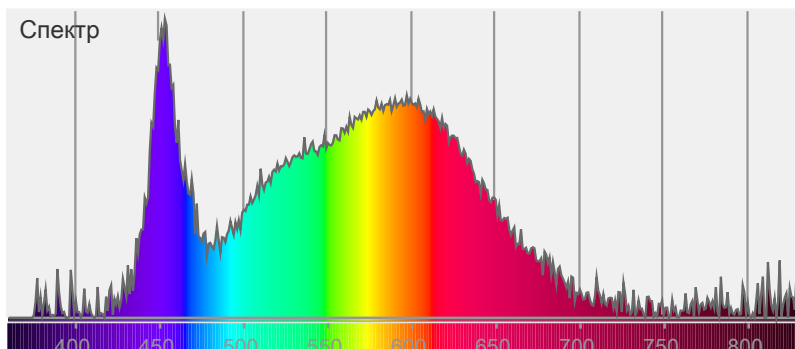


Цвет



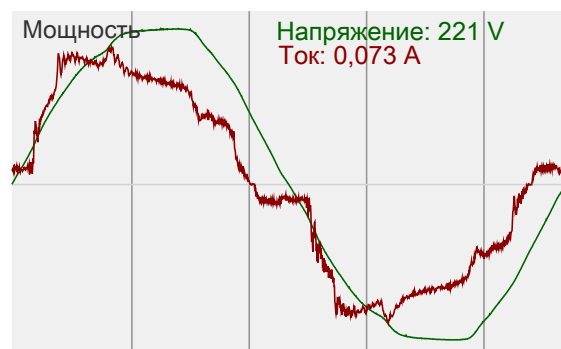
CIE1931
x: 0,370
y: 0,366

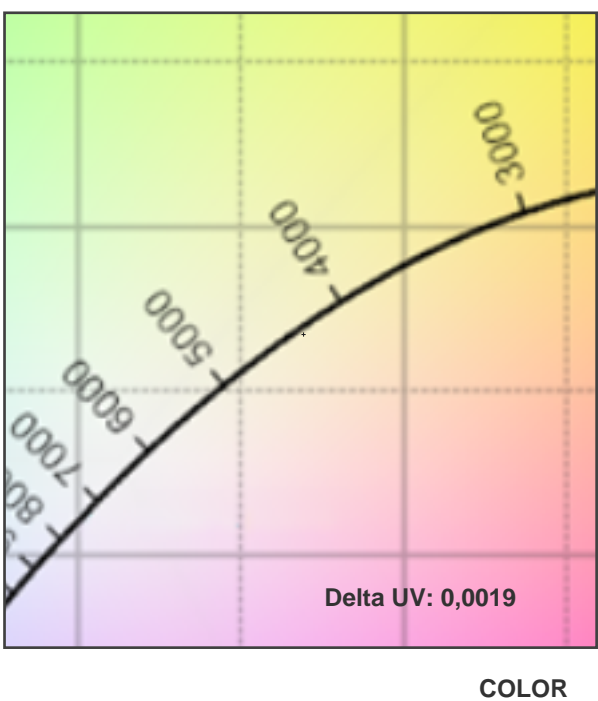
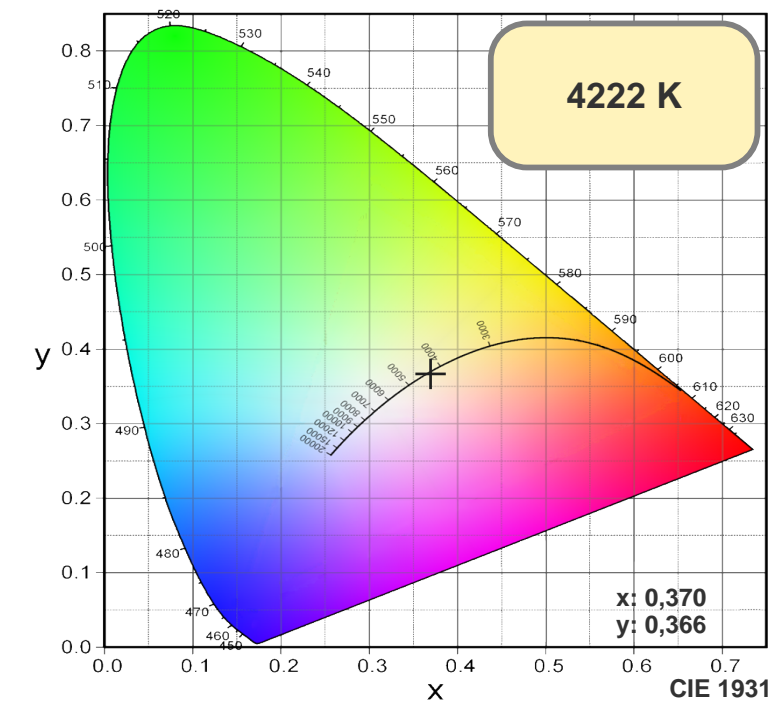
Спектр



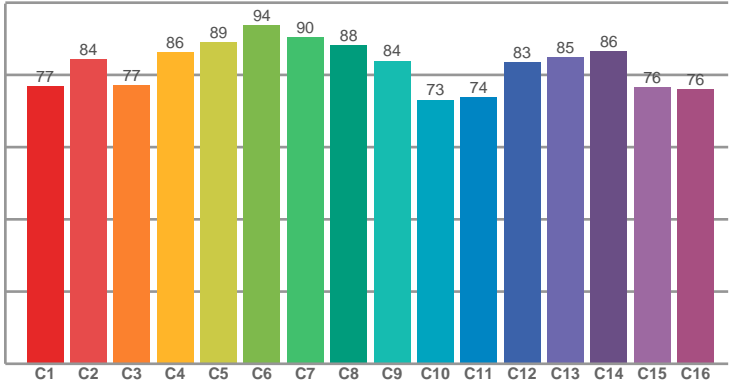
Мощность

Напряжение: 221 V
Ток: 0,073 A

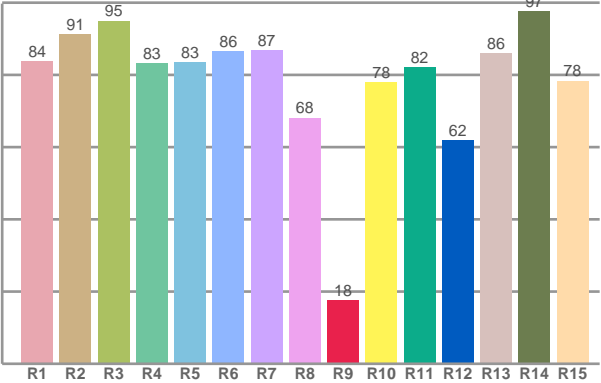




TM30: 82,4



CRI: 84,7 (R1-R8)



CRI R values, only R1-R8 are used to calculate final CRI value

R1	R2	R3	R4	R5	R6	R7	R8	R9	R10	R11	R12	R13	R14	R15
83,77	91,12	94,96	83,24	83,37	86,46	86,71	68,06	17,53	77,84	82,17	61,90	85,90	97,50	78,35

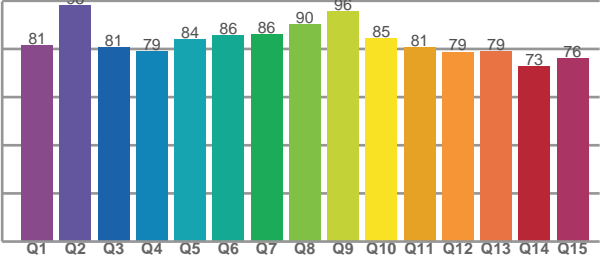
TM30 C values, 16 binned values out of total of 99 C values

C1	C2	C3	C4	C5	C6	C7	C8	C9	C10	C11	C12	C13	C14	C15	C16
76,79	84,20	77,02	86,32	88,96	93,79	90,38	88,22	83,90	73,09	73,84	83,41	84,83	86,48	76,46	75,99

CQS Q values

Q1	Q2	Q3	Q4	Q5	Q6	Q7	Q8	Q9	Q10	Q11	Q12	Q13	Q14	Q15
81,47	98,11	80,81	78,95	84,13	85,58	86,22	90,32	95,76	84,57	80,67	78,86	79,26	72,80	76,14

CQS: 82,3



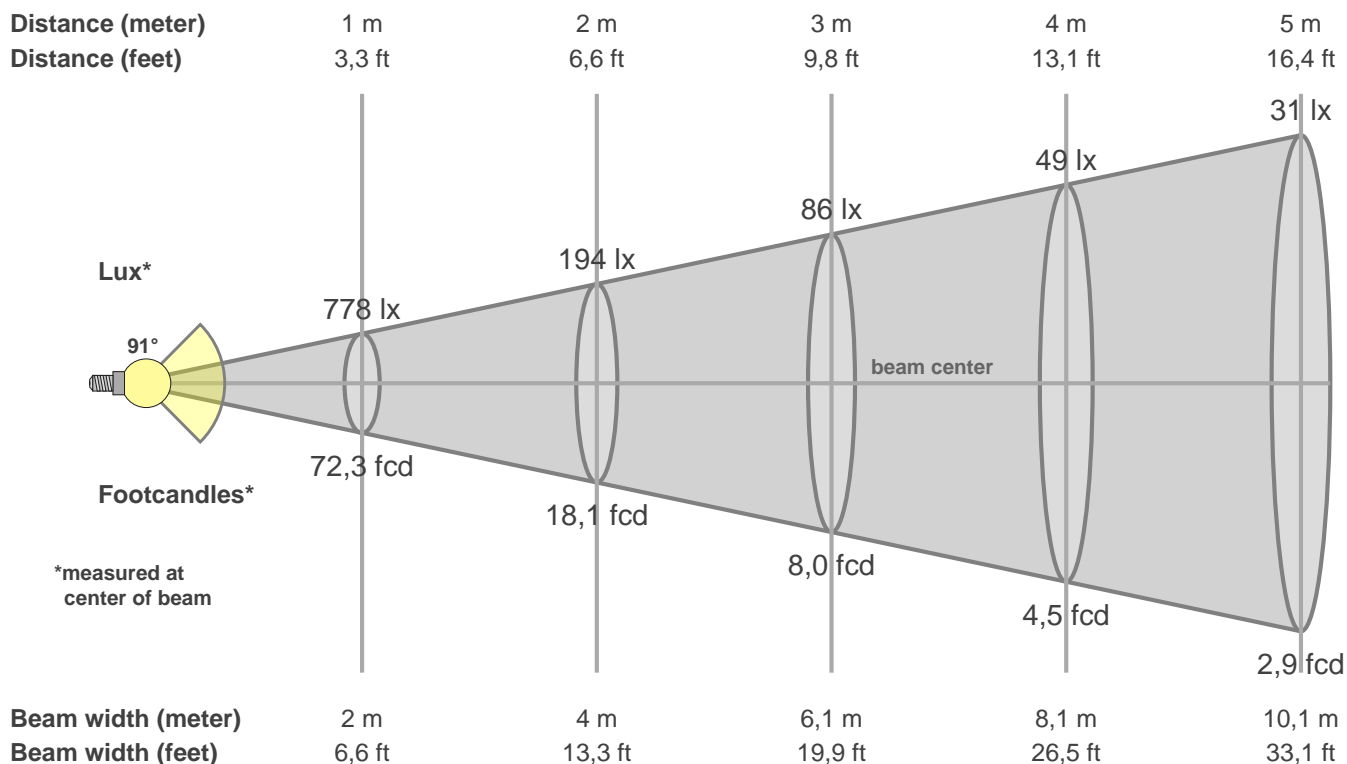
Color parameters

CCT	CRI	CRI R9	TM30 Rf	TM30 Rg	CQS	x	y	u	v	Duv
4222 K	84,7	17,5	82,4	95,6	82,3	0,4	0,4	0,2	0,3	0,0019

СЕВЕРО-ЗАПАДНАЯ СВЕТОТЕХНИЧЕСКАЯ ЛАБОРАТОРИЯ

Beam details

3 of 3



Intensities in 0° c-plane

0°	5°	10°	15°	20°	25°	30°	35°	40°	45°	50°	55°	60°	65°	70°	75°	80°	85°	90°	95°
778	783	774	752	726	698	651	570	466	363	278	211	160	123	97	78	61	42	28	24
100%	101%	99%	97%	93%	90%	84%	73%	60%	47%	36%	27%	21%	16%	13%	10%	8%	5%	4%	3%

Intensities in 90° c-plane

0°	5°	10°	15°	20°	25°	30°	35°	40°	45°	50°	55°	60°	65°	70°	75°	80°	85°	90°	95°
778	774	769	757	729	699	655	598	516	424	334	256	193	144	107	80	52	29	11	6
100%	100%	99%	97%	94%	90%	84%	77%	66%	55%	43%	33%	25%	19%	14%	10%	7%	4%	1%	1%

Intensities in 180° c-plane

0°	5°	10°	15°	20°	25°	30°	35°	40°	45°	50°	55°	60°	65°	70°	75°	80°	85°	90°	95°
778	772	762	735	702	669	624	556	463	363	279	213	162	124	98	78	59	40	28	25
100%	99%	98%	95%	90%	86%	80%	71%	60%	47%	36%	27%	21%	16%	13%	10%	8%	5%	4%	3%

Intensities in 270° c-plane

0°	5°	10°	15°	20°	25°	30°	35°	40°	45°	50°	55°	60°	65°	70°	75°	80°	85°	90°	95°
778	774	765	755	738	705	661	593	511	423	332	254	193	144	106	78	51	28	12	8
100%	100%	98%	97%	95%	91%	85%	76%	66%	54%	43%	33%	25%	18%	14%	10%	7%	4%	1%	1%

Beam angle 50%	Field angle 10%	Cutoff angle 2,5%	Intensity ratio in 120° cone	Intensity ratio in 90° cone
90,6°	149,6°	357,5°	80,1%	61,1%