

СЕВЕРО-ЗАПАДНАЯ СВЕТОТЕХНИЧЕСКАЯ ЛАБОРАТОРИЯ

Эффективность света:

124 Lumen/Watt

Качество света:

CRI: 81,3

Цветовая температура:

4131 K

Поток: 17435 lm

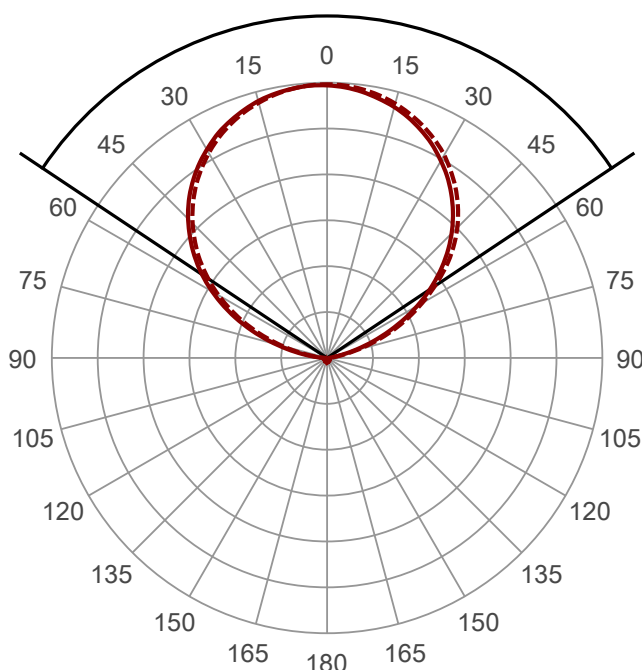
Интенс.: 6109 cd

Мощн.: 141 W

КПД: 0,98

Угол пучка

112,6° (3 C-PLANES)

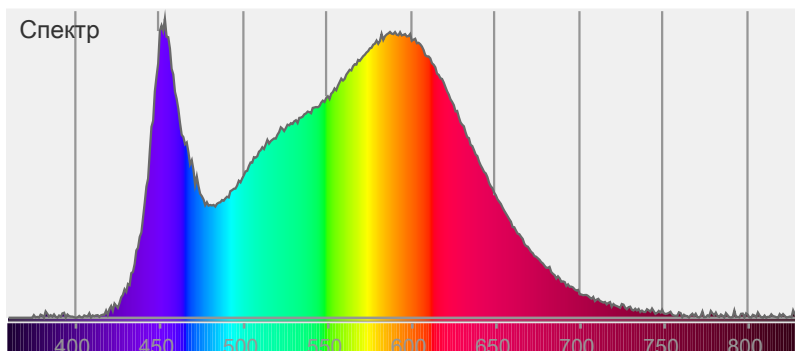


Цвет



CIE1931
x: 0,377
y: 0,381

Спектр



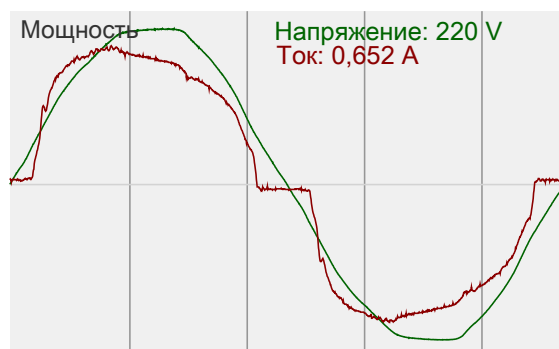
Название продукта:

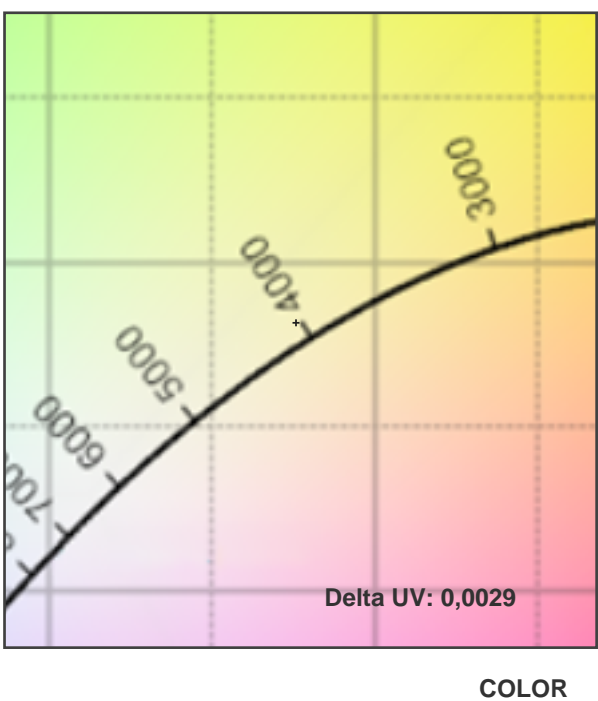
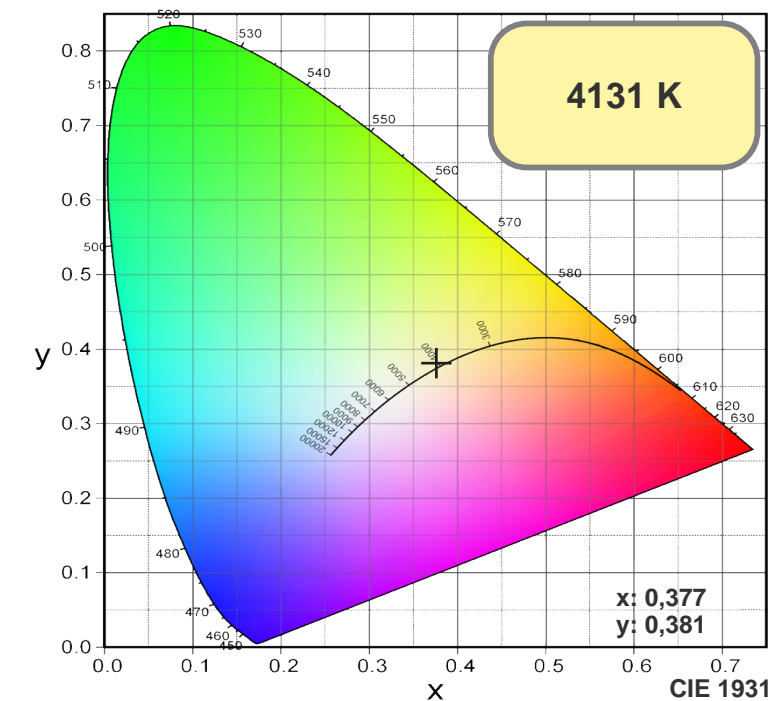
СС

M1-K-E-144-250.300.130-4-0-67

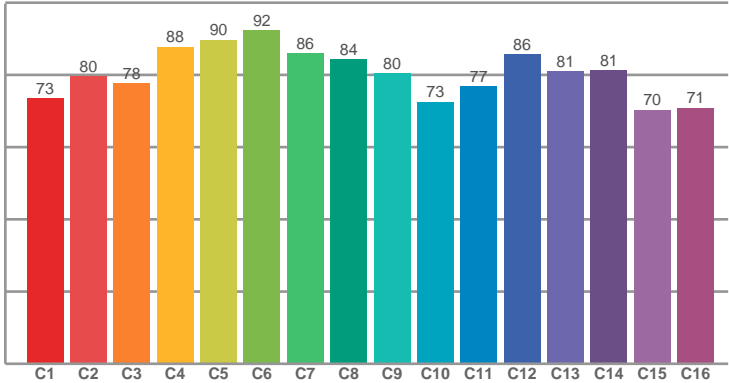
Дата и время:

14.05.2016 13:08:24

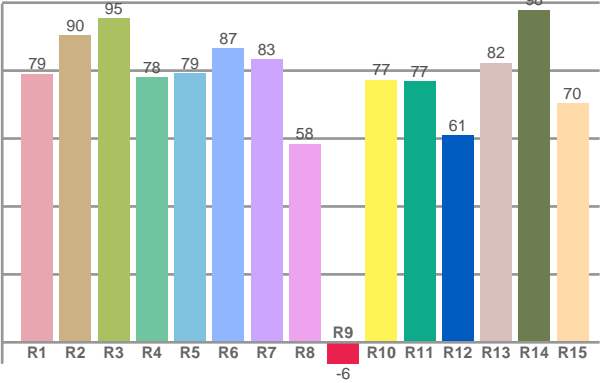




TM30: 80,6



CRI: 81,3 (R1-R8)



CRI R values, only R1-R8 are used to calculate final CRI value

R1	R2	R3	R4	R5	R6	R7	R8	R9	R10	R11	R12	R13	R14	R15
78,99	90,32	95,43	77,96	79,18	86,55	83,25	58,45	-6,32	77,23	76,75	61,02	82,22	97,84	70,38

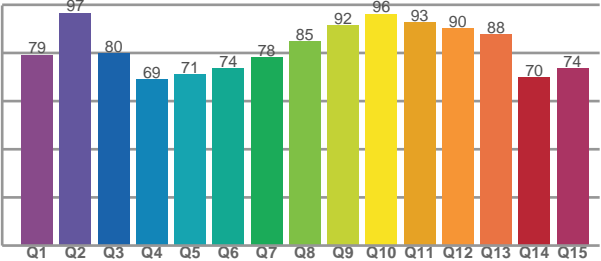
TM30 C values, 16 binned values out of total of 99 C values

C1	C2	C3	C4	C5	C6	C7	C8	C9	C10	C11	C12	C13	C14	C15	C16
73,48	79,65	77,66	87,71	89,69	92,35	86,04	84,19	80,34	72,54	76,75	85,63	80,89	81,29	70,28	70,86

CQS Q values

Q1	Q2	Q3	Q4	Q5	Q6	Q7	Q8	Q9	Q10	Q11	Q12	Q13	Q14	Q15
79,31	96,74	79,90	69,12	71,29	73,79	78,23	84,89	91,53	96,36	92,91	90,37	87,68	70,12	73,63

CQS: 80,0



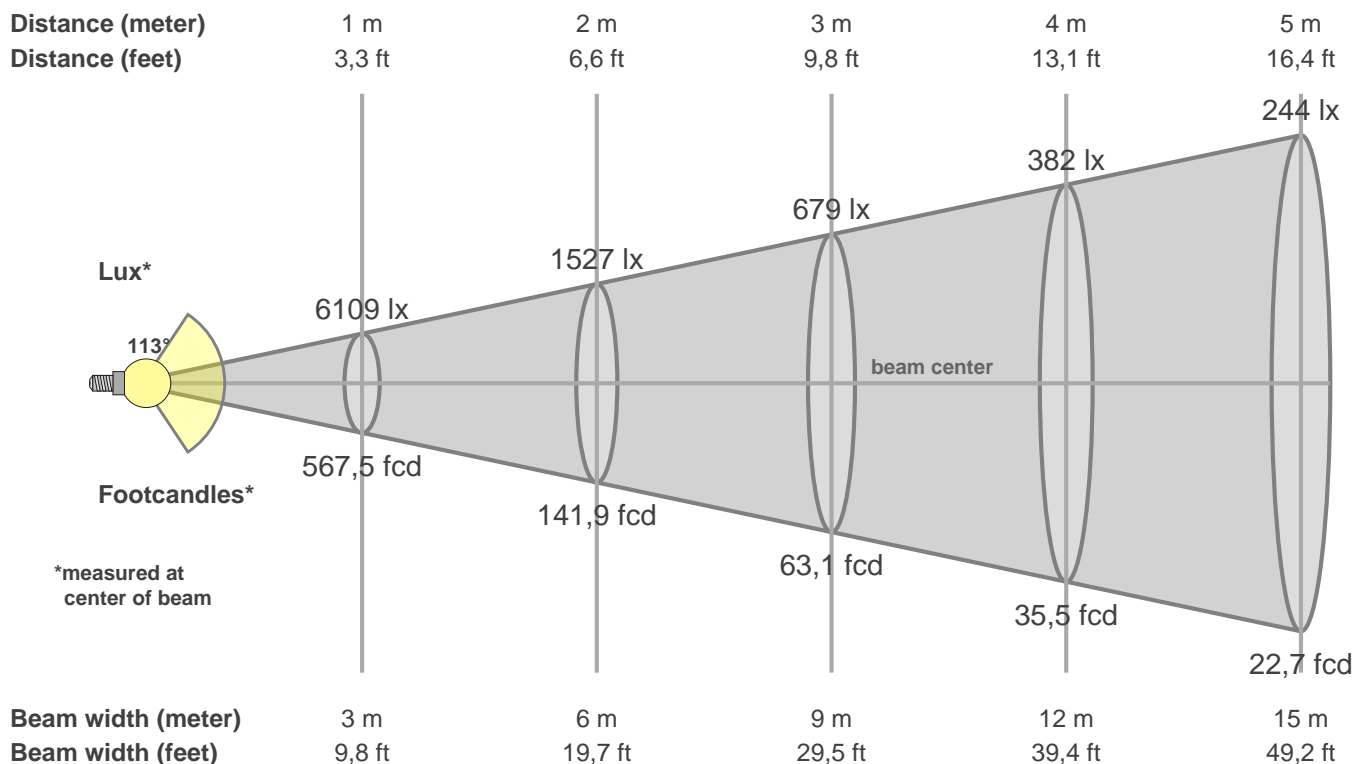
Color parameters

CCT	CRI	CRI R9	TM30 Rf	TM30 Rg	CQS	x	y	u	v	Duv
4131 K	81,3	-6,3	80,6	91,6	80,0	0,4	0,4	0,2	0,3	0,0029

СЕВЕРО-ЗАПАДНАЯ СВЕТОТЕХНИЧЕСКАЯ ЛАБОРАТОРИЯ

Beam details

3 of 3



Intensities in 0° c-plane

0°	5°	10°	15°	20°	25°	30°	35°	40°	45°	50°	55°	60°	65°	70°	75°	80°	85°	90°	95°
6109	6103	6051	5960	5811	5630	5389	5110	4786	4404	3971	3501	2969	2396	1793	1195	661	259	76	46
100%	100%	99%	98%	95%	92%	88%	84%	78%	72%	65%	57%	49%	39%	29%	20%	11%	4%	1%	1%

Intensities in 60° c-plane

0°	5°	10°	15°	20°	25°	30°	35°	40°	45°	50°	55°	60°	65°	70°	75°	80°	85°	90°	95°
6109	6083	6013	5897	5739	5534	5281	4980	4637	4244	3807	3322	2794	2223	1626	1040	532	181	61	45
100%	100%	98%	97%	94%	91%	86%	82%	76%	69%	62%	54%	46%	36%	27%	17%	9%	3%	1%	1%

Intensities in 180° c-plane

0°	5°	10°	15°	20°	25°	30°	35°	40°	45°	50°	55°	60°	65°	70°	75°	80°	85°	90°	95°
6109	6058	5956	5821	5628	5391	5100	4767	4381	3945	3453	2915	2335	1719	1119	596	229	73	57	57
100%	99%	98%	95%	92%	88%	83%	78%	72%	65%	57%	48%	38%	28%	18%	10%	4%	1%	1%	1%

Intensities in 240° c-plane

0°	5°	10°	15°	20°	25°	30°	35°	40°	45°	50°	55°	60°	65°	70°	75°	80°	85°	90°	95°
6109	6080	6002	5878	5703	5489	5228	4901	4532	4109	3615	3047	2450	1860	1260	711	297	83	55	59
100%	100%	98%	96%	93%	90%	86%	80%	74%	67%	59%	50%	40%	30%	21%	12%	5%	1%	1%	1%

Beam angle 50%	Field angle 10%	Cutoff angle 2,5%	Intensity ratio in 120° cone	Intensity ratio in 90° cone
112,6°	155,2°	168,8°	79,6%	54,2%